

Components on board:

- Two connectors for power supply
- 10/100 Ethernet connector
- SDmicro flash card
- Control button «Set»
- Six two-pin terminator, connects 120 Ohm resistor between lines A and B («T0»-«T5»)
- Art-Net LED activity («Art-Net»)
- File system LED activity («SD»)
- Power LED («Led»)
- Six connectors for DMX output

Electrical:

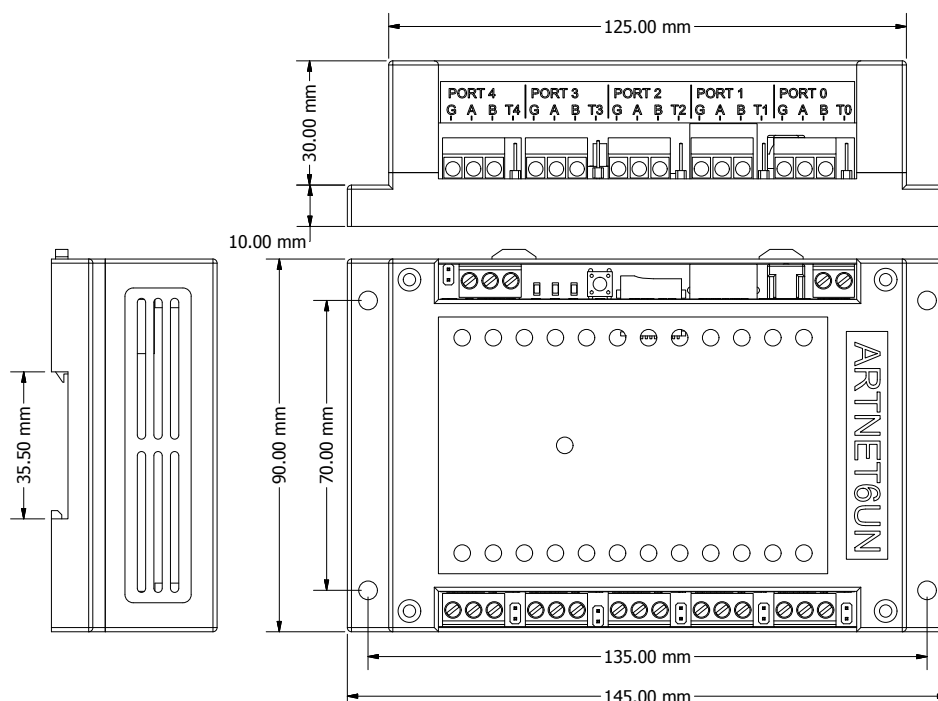
- Supply voltage 7V - 24V
- Supply 5V
- Supply current of the controller 350 mA
- DMX lines have overload protection
- Operation Range -40°C to 50°C

Features of firmware:

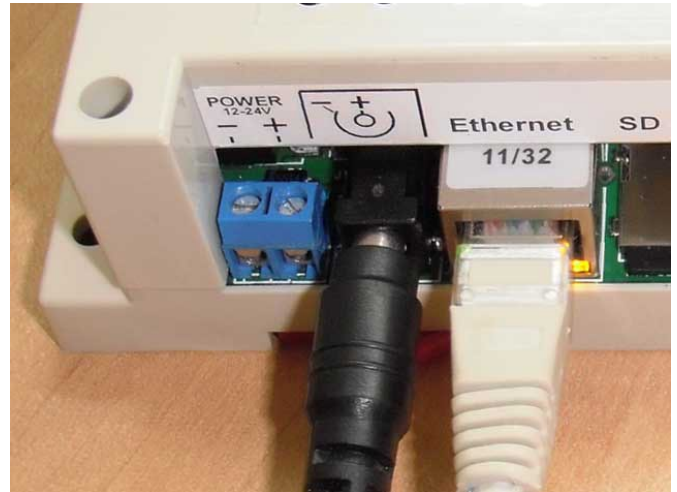
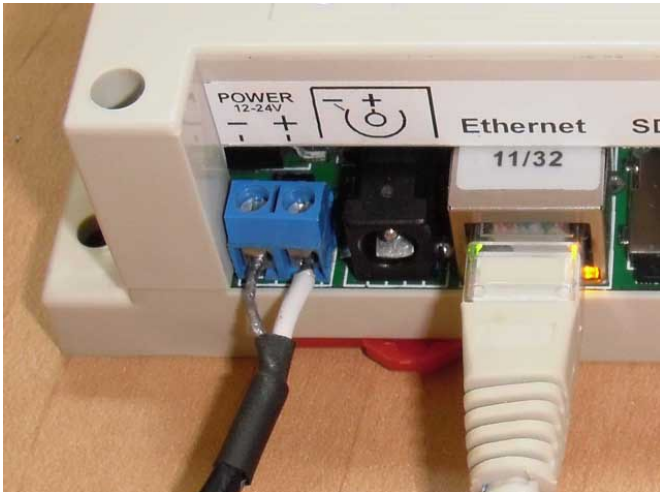
- Ethernet to DMX 512/1990
- Ethernet protocol Art-Net III
- sACN multicast (E1.31)
- Up to six DMX 512 ports output
- Up to six DMX 512 ports input (for Art-Net)
- Web server for configuration net and universes
- 30 fps. for video applications on every universe

Mechanical:

Weight: 170 grams. Installation on DIN rail
35 mm.



1. Connect the power supply and Ethernet

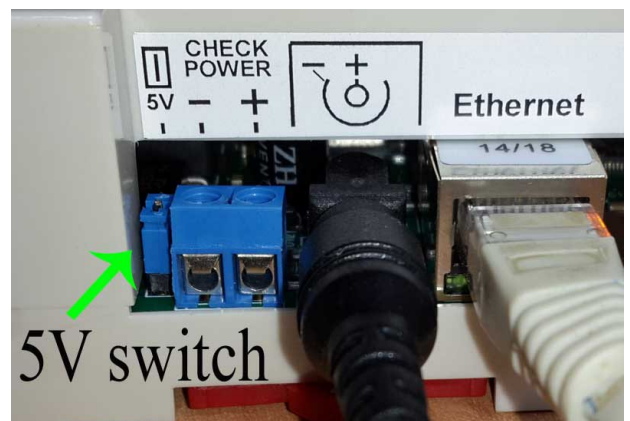


1.1 Power:

Power connection may be with any connectors. DC adapter should have output current 500mA. minimum. The supply voltage must be 7V - 24V. All connected devices must be grounded.

1.1.1 Power 5V:

If you need to use controller with 5V, you must close the switch. The controller will be burn if voltage is higher than 5 volts. We recommend to close the switch after checking the power supply's voltage.



1.2 Network configuration:

These is the defaults settings:

IP: 2.0.0.2
MASK: 255.0.0.0
MAC: 12:45:78:98:34:76
Gateway IP: 192.168.0.1

1.3 Setup network default procedure:

- Disable controller's power supply.
- Push button «Set». Hold down the button.
- Enable controller's power supply.
- Wait two seconds.
- Release the button «Set»

1.3.1 You should check and assign different MAC addresses to your controllers after the firmware has been replaced.

1.4 Example of network settings for the connected PC:

☐ Obtain an IP address automatically
☒ Use the following IP address:

IP address: 2 . 0 . 0 . 100
 Subnet mask: 255 . 0 . 0 . 0
 Default gateway: . . .

2. SDmicro card

2.1 The controller can work without a flash card.

2.2 Card necessary to store files of the web server and configuration.

2.3 The card must be formatted before use as FAT32.

2.4 The directory structure is:



This structure you can not change. Not permitted to modify the files in WEB directory: «INDEX.HTM», «DEVCTR.HTM», «ARTP0B.HTM». Directory «CFG» file contains «AN_6_20.CFG». This file contains all the settings of the controller.

c. All the attributes of the files must be in the off position.

d. Replace a file «AN_6_20.GFG» on the base, makes the configuration as a default.

2.5 The pages downloaded from the flash card have the form:

Electron-design

Home page | **Device control** | Port 0 | Port 1 | Port 2 | Port 3 | Port 4 | Port 5

Network name configuration

ShortName: Ed6_00__00

LongName: Electron-design artnet_6_00 Art-Net node_0

Network configuration

Source IP	2.0.0.2
Gateway IP	192.168.0.1
Subnet Mask	255.0.0.0
MAC Address	42:45:78:98:34:76
Virtual IP	2.0.0.3
Input to IP	2.0.0.1

Univers 5 and 6 ☒ On ☐ Off

Protocol configuration

☒ Art-Net ☐ sACN(E1.31)

Save to SD | Save to Flash

Reboot

(c) Electron-design firmware ArtNet to Dmx6 2.1.04, web server V 2.0

2.6 You can use a flash card to boot the controller with an alternate configuration.

3. Control button «Set»

3.1 This button is used: [Setup network default procedure](#)

3.2 Start firmware upgrade.

- a. Disable controller power supply.
- b. Unpack and copy file «an6_00.img» to miniSD card, in the main directory . Insert the miniSD card to miniSD slot.
- c. Push button «Set». Hold down the button.
- d. Enable controller's power supply.
- e. Wait for downloading of the image.
- f. Delete «an6_00.img» file from the flash.

4. DMX terminator

4.1 All of DMX ports have a two-pin connector for resistor 120-ohm. If the connector is closed then the resistor connects to the lines A and B. Connector should be closed just when the port is connected as an input and the controller is on the end of the line DMX.

5. Art-Net LED activity

5.1 Displays the reception of the packets Art-Net and sACN.

5.2 Displays the flash memory operations of the processor.

6. File system LED activity

6.1 Displays file system requests.

6.2 Displays errors of the image loading.

7. Device configuration

7.1 To enter you need to dial in your browser: <http://2.0.0.2> (if address as default). Click on the button «Device control».

7.2 «ShortName» and «LongName» - uses in Art-Net mode.

7.3 «Source IP» - the main address of the controller. All Art-Net packets must be sent to this address.

7.4 «Gateway IP» in the LAN does not use.

7.5 «Subnet Mask»

7.6 «MAC address» - need to select a different address for different controllers.

7.7 «Virtual IP» - look «9. Port 5 and 6 configuration».

7.8 «Input to IP» - if the switch is in the OFF position, input stream will be sent to BROADCAST address, if in On position then the input stream will be sent to the address specified in this field. It affects on the ports are configured as input.

7.9 «Art-Net» and «sACN» - choose a protocol.

7.10 «Save configuration» -saving changes. Changes will be applied after a reset (button «Reboot») or power Off->On.

7.11 If you use ArtNet and you have more then 12 universes, you must configure the software for sending your data as UNICAST (to main IP of controllers).

Electron-design

[Home page](#)
[Device control](#)
[Port 0](#)
[Port 1](#)
[Port 2](#)
[Port 3](#)
[Port 4](#)
[Port 5](#)

Network name configuration

ShortName:

LongName:

Network configuration

Source IP	<input type="text" value="2.0.0.2"/>	
Gateway IP	<input type="text" value="192.168.0.1"/>	
Subnet Mask	<input type="text" value="255.0.0.0"/>	
MAC Address	<input type="text" value="42:45:78:98:34:76"/>	
Virtual IP	<input type="text" value="2.0.0.3"/>	Univers 5 and 6
Input to IP	<input type="text" value="2.0.0.1"/>	<input type="radio"/> On <input checked="" type="radio"/> Off

Protocol configuration

☒ Art-Net
 ☐ sACN(E1.31)

[Save configuration](#)

[Reboot](#)

(c) Electron-design firmware ArtNet to Dmx6 2.0.00, web server V 2.0

8. Port configuration

8.1 In Art-Net mode, each port can be configured as output or input(look 7.8).

8.2 In sACN mode you can not have input and you should not set NET/Subnet/Universe as 0.

8.3 Each port can operate in its own «net».

8.4 Each port has 256 combinations «Subnet/Universes»

Electron-design

The screenshot shows the 'Port 0' configuration page for Art-Net mode. At the top, there is a navigation bar with buttons for 'Home page', 'Device control', 'Port 0' (selected), 'Port 1', 'Port 2', 'Port 3', 'Port 4', and 'Port 5'. Below the navigation bar, the title 'Art-Net port mode(requires a reboot)' is displayed. The main configuration area includes a radio button group for 'Input' and 'Output', with 'Output' selected. Below this is a 'Net' label followed by a dropdown menu showing '0(00)'. Then, a 'Subnet/Universe' label is followed by another dropdown menu showing '0(00)'. At the bottom of the configuration area are two buttons: 'Save configuration' and 'Reboot'.

(c) Electron-design firmware ArtNet to Dmx6 2.0.00, web server V 2.0

Electron-design

The screenshot shows the 'Port 0' configuration page for sACN mode. At the top, there is a navigation bar with buttons for 'Home page', 'Device control', 'Port 0' (selected), 'Port 1', 'Port 2', 'Port 3', 'Port 4', and 'Port 5'. Below the navigation bar, the title 'sACN(E1.31) port mode(requires a reboot)' is displayed. The main configuration area starts with a message: 'You can not use Net+Subnet+Universe as 0'. Below this is a 'Net' label followed by a dropdown menu showing '0(00)'. Then, a 'Subnet/Universe' label is followed by another dropdown menu showing '1(01)'. At the bottom of the configuration area are two buttons: 'Save configuration' and 'Reboot'.

9. Port 5 and 6 configuration

9.1 Art-Net protocol has a single IP address for 4 ports. Ports 5 and 6 have a virtual IP address. This address is required for the automatic detection of ports 5 and 6.

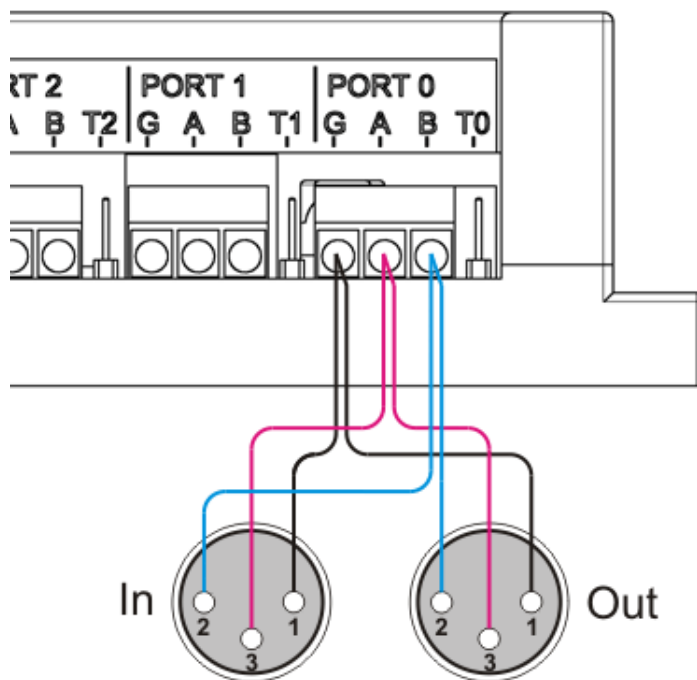
9.2 Ports 5 and 6 always get messages to the IP address of the controller (to the main address). If there are more than one controller in the system, then necessary a UNICAST data transmission. In this case, you must configure the port 5 and 6 manually.

10. Firmware updates.

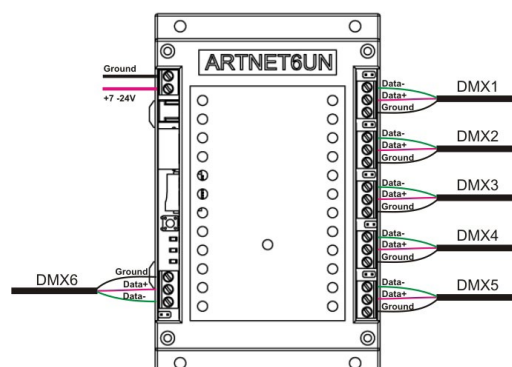
10.1 Procedure: [watch on YouTube](#).

10.2 [Download the latest firmware](#).

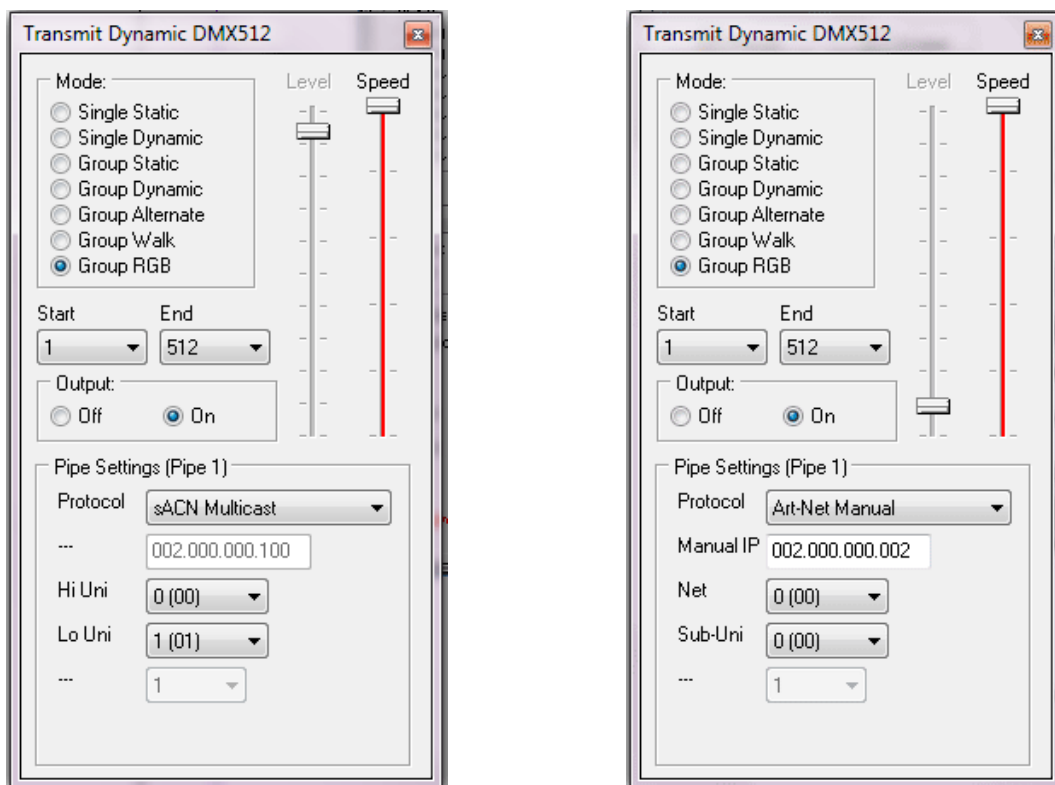
11. XLR3 DMX connector



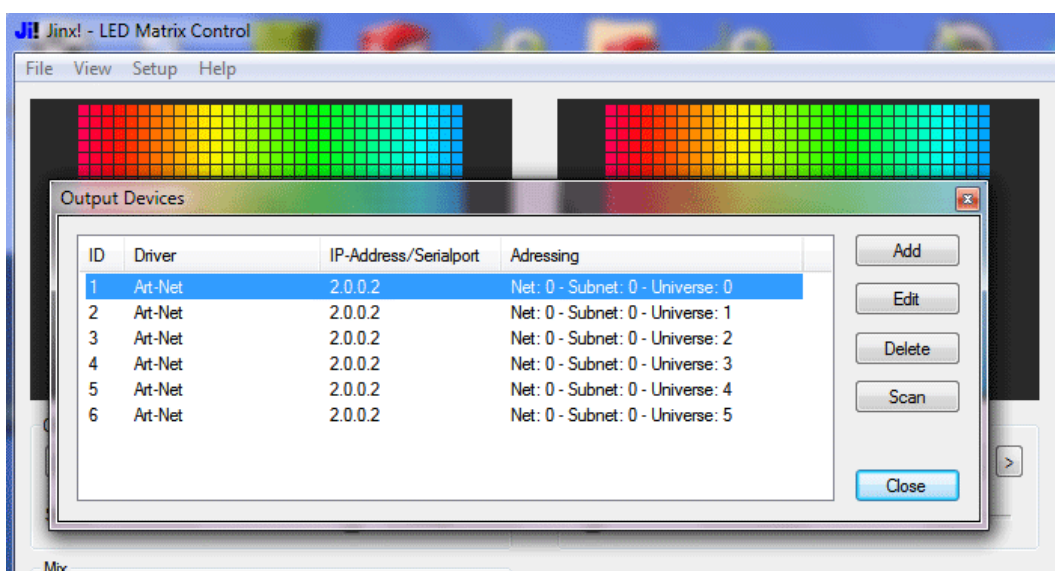
12. DMX and power



12. DMX-Workshop



12. jinx configuration



Links:

[Art-Net protocol.](#)

[Led DMX decoder.](#)

[Led DMX converter DMX to WS2801](#)

[Led DMX converter DMX to UCS1903,WS2811,WS2812\(B\)](#)

[Art-Net DMX to SPI controller](#)

[FreeStyler](#)

[Madrix](#)

[Jinx](#)

[eBay store](#)